

PRACTICE WORKSHEET

1. THE WORLD OF LIVING 2. MEASUREMENT AND MOTION

NAME: _____ ROLL NO. _____ DATE- _____

Q.1 Choose the correct answer-

- i. _____ is a micro-organism which has the characteristics of both living and non living.
a) Bacteria b) virus c) fungi d) amoeba
- ii. Bacteria is a _____ organism.
a) Unicellular b) multicellular c) fungus d) none of these
- iii. Quantities which are measurable are called _____.
a) Physical quantities b) count number c) measurement d) addition
- iv. Movement of potter's wheel is an example of _____ motion.
a) Rotational b) curvilinear c) revolution d) rectilinear

Q.2. Name the following.

- i. The place where plants and animals live _____.
- ii. A unicellular organism. _____.
- iii. An insectivorous animal. _____.
- iv. Type of motion of plucked string of guitar. _____.
- v. A parasitic animal. _____.

Q.3. There was a table in Shyam's house. Shyam and his two friends Ram and Rohan when measured the table by the hand span found it to be 6, 7 and 8 hand span respectively.

Answer the following questions based on the above information.

- a) What is the standard unit of measurement of length?
- b) Write some methods to measure length of object other than that mentioned above.

Q. 4. Assertion and Reason questions:

- a) Assertion and reason are correct and reason is the correct explanation of assertion.
- b) Assertion and reason both are correct but reason is not the correct explanation of assertion.
- c) Assertion is true and reason is false.
- d) Assertion is false but reason is true.

i). Assertion-Second is the standard unit of measurement of time.
Reason – Second does not gives us the accurate measurement of time..

ii). Assertion – Dodder is a parasitic plant.
Reason – Dodder plant gets food from the dead and decaying bodies..

iii). Assertion – Lizard is an invertebrate animal.
Reason – Backbone is present in the lizard.

iv). Assertion – Measurement is comparison of unknown quantity with known quantity.
Reason – Through comparison we get the correct measurement.

Q. 5. Identify the picture and write the answer:

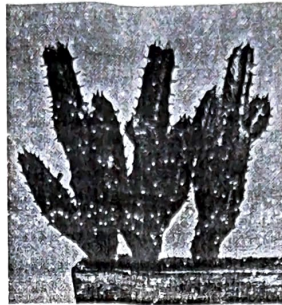
- 1) a) Name the type of motion in the given picture.
- b) Write any two examples of this kind of motion .



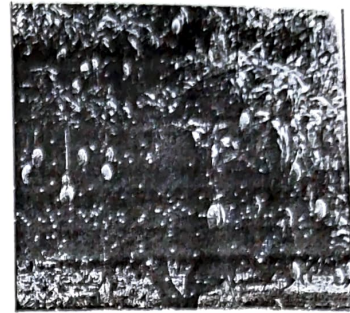
2) Name the plant and write its habitat:



A



B



C

Q.6. Paragraph based questions ;---(Answer the questions that follow paragraph)

1. Time plays an important role in our life. We use a clock to measure the time. In ancient times, people did not have any such instrument to measure the time. They therefore used natural events (e.g. day and night, season in a year, change in the appearance of the moon etc) to count the time intervals.
 - a. Name the device which is used to measure the time.
 - b. Name some natural events which were used by the ancient people to measure the time.
 - c. Name some clocks which are used now a days to measure the time.

2. Rajesh took two healthy potted plants. He started giving water to one potted plant regularly for one week and kept the other potted plant without water. It was observed that healthy plant was moving towards sunlight.
 - a. What is your observation about both the potted plants?.
 - b. Name the process in plants in which water is needed .
 - c. Which characteristic of plant is described in above passage illustrating the movement of plant towards light.
 - d. Name the gas which is required for photosynthesis.